



WT series

Intergated indoor LED Display

**THINK
OUTSIDE
THE
BOX**





Flat data cable

Free logo customized



Screw hole



Receiving card



Lock



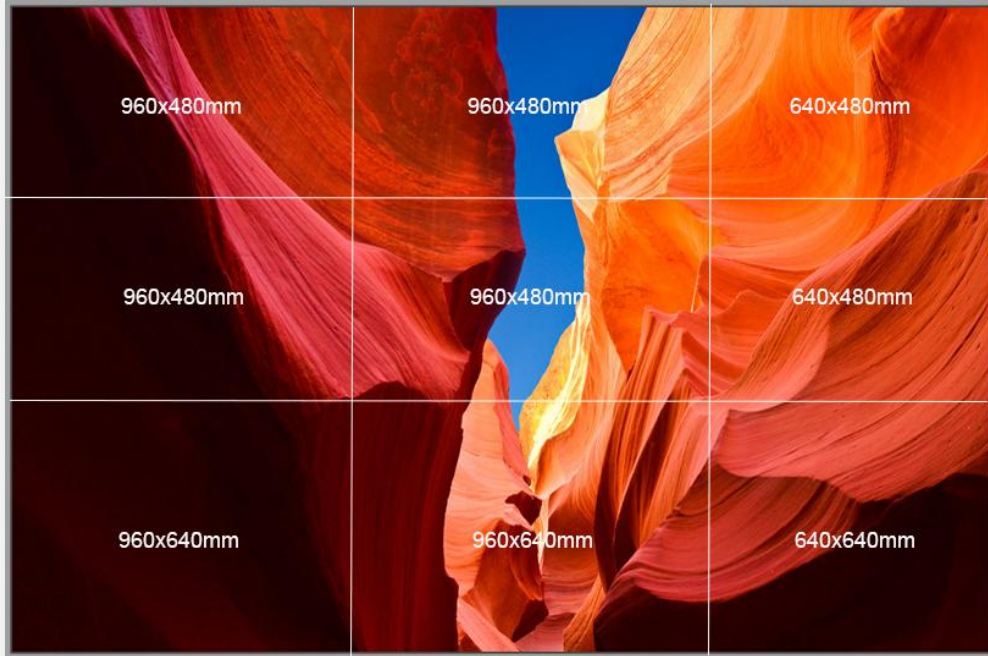
Power supply



AC 5v power cable



Cabinet number



Compatibility

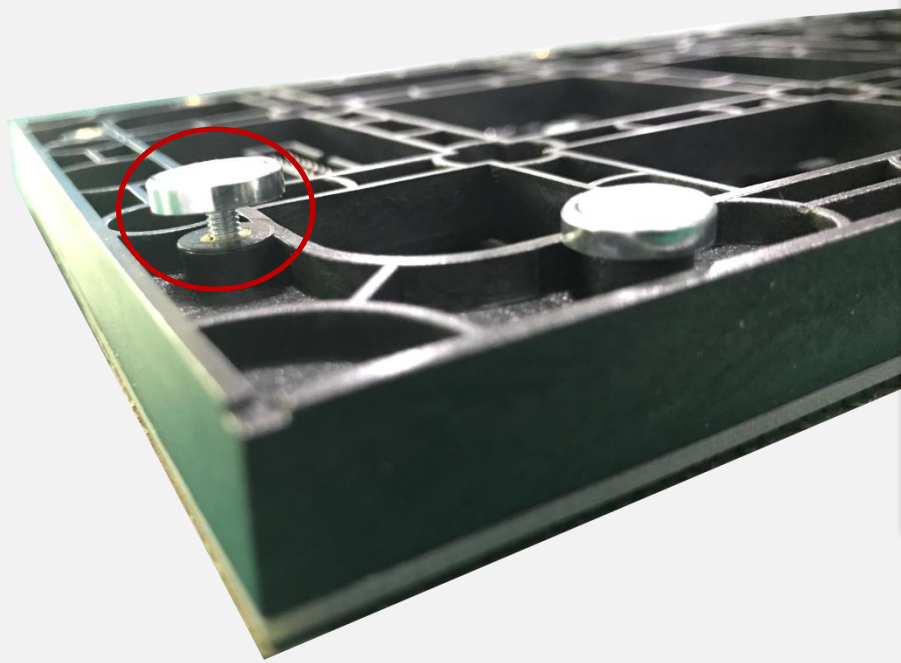
Compatible with different size cabinet
without gap



FRONT Service

LED Module
Power supply
Receiving card
All take out from front side

Noiseless design for indoor use.

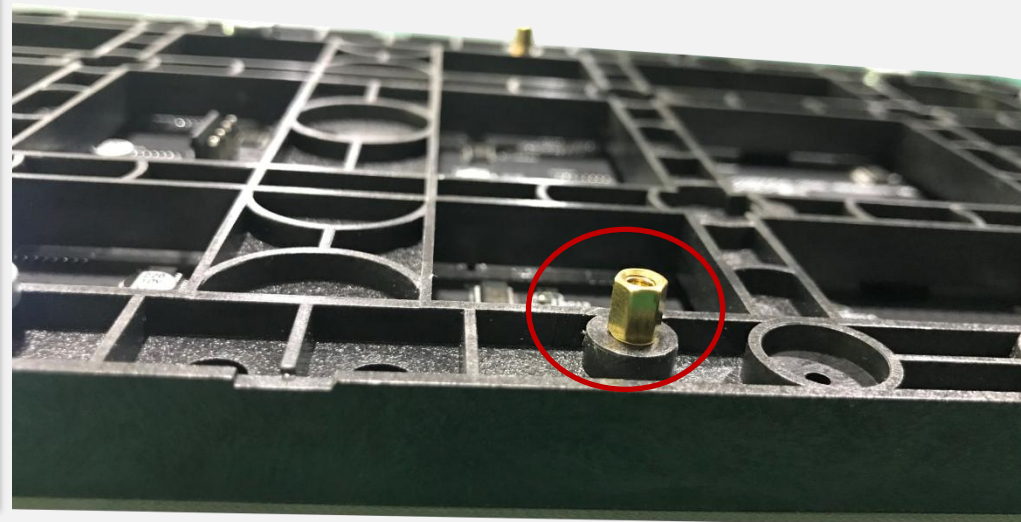


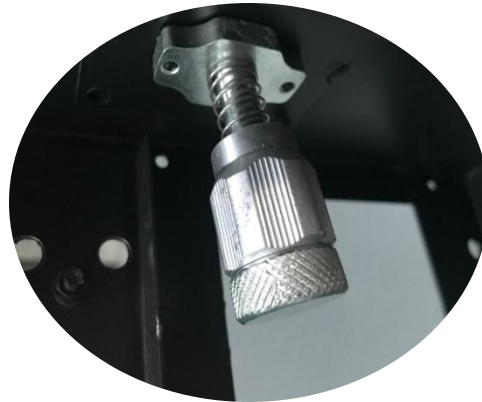
Adjustable Magnets

Adjustable Flatness

Positing Copper Pin

Precise positioning



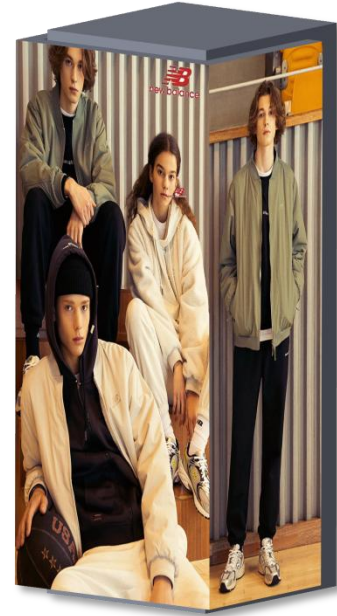
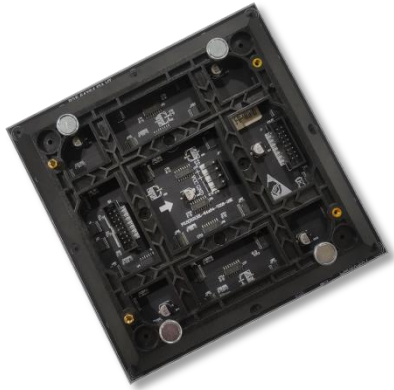


Inside Quick Lock

Fast locking
Easy handle

Less stitching gap

terminal of plug-in connectors for quick
connections to save installation time



45° Customized Module

90° angle project option



Concaved & Convex

Right angle column

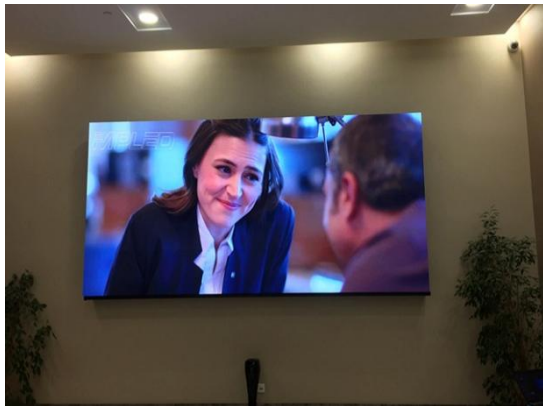




Embed Installation



Customized Installation



Hanging Installation



Stacking Installation

Multiple installation modes



Specification for indoor models

Pixel pitch	2.5mm	
LED configuration	SMD2020	
Brightness	1000~1200 nits	
Viewing angle	160° / 140° (50% brightness)	
Scan mode	1/32	
Refresh rate	3840Hz	
Processing	16 bits	
Module size	320mm x 160mm x 15mm (W x H x D)	12.60" x 6.30" x 5.91" (W x H x D)
Panel size (customizable)	960mm x 640mm x 98mm (W x H x D)	37.80" x 25.20" x 3.86" (W x H x D)--Size for example
Panel weight	17.2kg / 17.69lbs	28kg/sqm
Input voltage	AC100~240V 50/60 HZ	
Power consumption (Avg)	180W/sqm	
Power consumption (Max)	600W/sqm	
Working temperature	-20°C~60°C	
IP rating	IP31/IP31	
Life span	100,000 hrs	
Warranty	24 months	

Specification for indoor models

Pixel pitch	3.3mm
LED configuration	SMD2020
Brightness	1000~1200 nits
Viewing angle	160° / 140° (50% brightness)
Scan mode	1/24
Refresh rate	3840Hz
Processing	16 bits
Module size	320mm x 160mm x 15mm (W x H x D) 12.60" x 6.30" x 5.91" (W x H x D)
Panel size (customizable)	960mm x 640mm x 98mm (W x H x D) 37.80" x 25.20" x 3.86" (W x H x D)--Size for example
Panel weight	17.2kg / 17.69lbs 28kg/sqm
Input voltage	AC100~240V 50/60 HZ
Power consumption (Avg)	180W/sqm
Power consumption (Max)	550W/sqm
Working temperature	-20°C~60°C
IP rating	IP31/IP31
Life span	100,000 hrs
Warranty	24 months

Specification for indoor models

Pixel pitch	4mm	
LED configuration	SMD2020	
Brightness	1000~1200 nits	
Viewing angle	160° / 140° (50% brightness)	
Scan mode	1/20	
Refresh rate	3840Hz	
Processing	16 bits	
Module size	320mm x 160mm x 15mm (W x H x D)	12.60" x 6.30" x 5.91" (W x H x D)
Panel size (customizable)	960mm x 640mm x 98mm (W x H x D)	37.80" x 25.20" x 3.86" (W x H x D)--Size for example
Panel weight	17.2kg / 17.69lbs	28kg/sqm
Input voltage	AC100~240V 50/60 HZ	
Power consumption (Avg)	180W/sqm	
Power consumption (Max)	620W/sqm	
Working temperature	-20°C~60°C	
IP rating	IP31/IP31	
Life span	100,000 hrs	
Warranty	24 months	